





**Mahendra's**

FOR MORE DISCOUNT VISIT [www.mahendras.org](http://www.mahendras.org) & USE PROMO CODE : **E13830**

# General Science By MCQ Part 18





- **Practice Question**

- There is no atmosphere on the moon because  
चाँद पर कोई वातावरण नहीं है क्योंकि

- (a) It is closer to the earth/ यह पृथ्वी के करीब है
- (b) It revolves round the earth/ यह पृथ्वी के चारों ओर घूमता है
- (c) It gets light from the sun/ यह सूरज से प्रकाश प्राप्त करता है
- (d) the value of escape velocity on the surface of the moon is small



**SOURAJIT GHOSH** 14 hours ago

Practice question

Op d) moon escape velocity low



REPLY



**Nadeem** 18 hours ago

The Value of Escape Velocity on the surface of the moon is small



REPLY



**manali behera** 17 hours ago

The value of escape velocity on the surface of the moon is small



REPLY



**Abhimanyu Rajput** 18 hours ago (edited)

The value of escape velocity on the surface of the moon is small Moon has no atmosphere because the value of acceleration due to gravity  $g$  on surface of the moon is small. Therefore, the value of escape speed on the surface of the moon is small only  $2.5\text{kms}^{-1}$

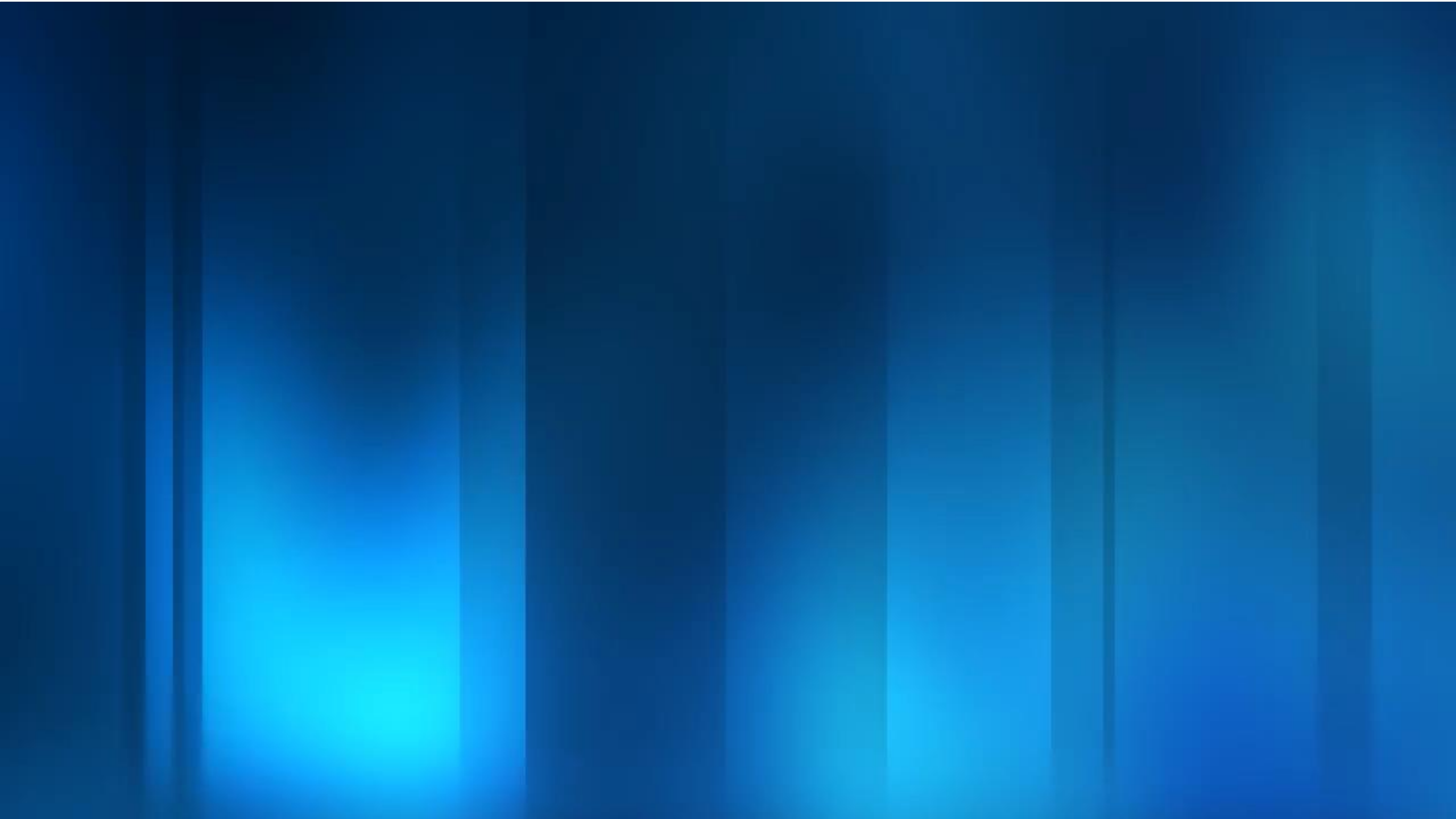


REPLY



**Manoj Kumar** 18 hours ago

d





- What happens when a chemical bond is formed?
- जब रासायनिक बंधन बनता है तो क्या होता है?
  - A) Energy is always released
  - B) Energy is always absorbed
  - C) Energy is neither released nor absorbed
  - D) More Energy is released than is absorbed.

• **Ans:A**

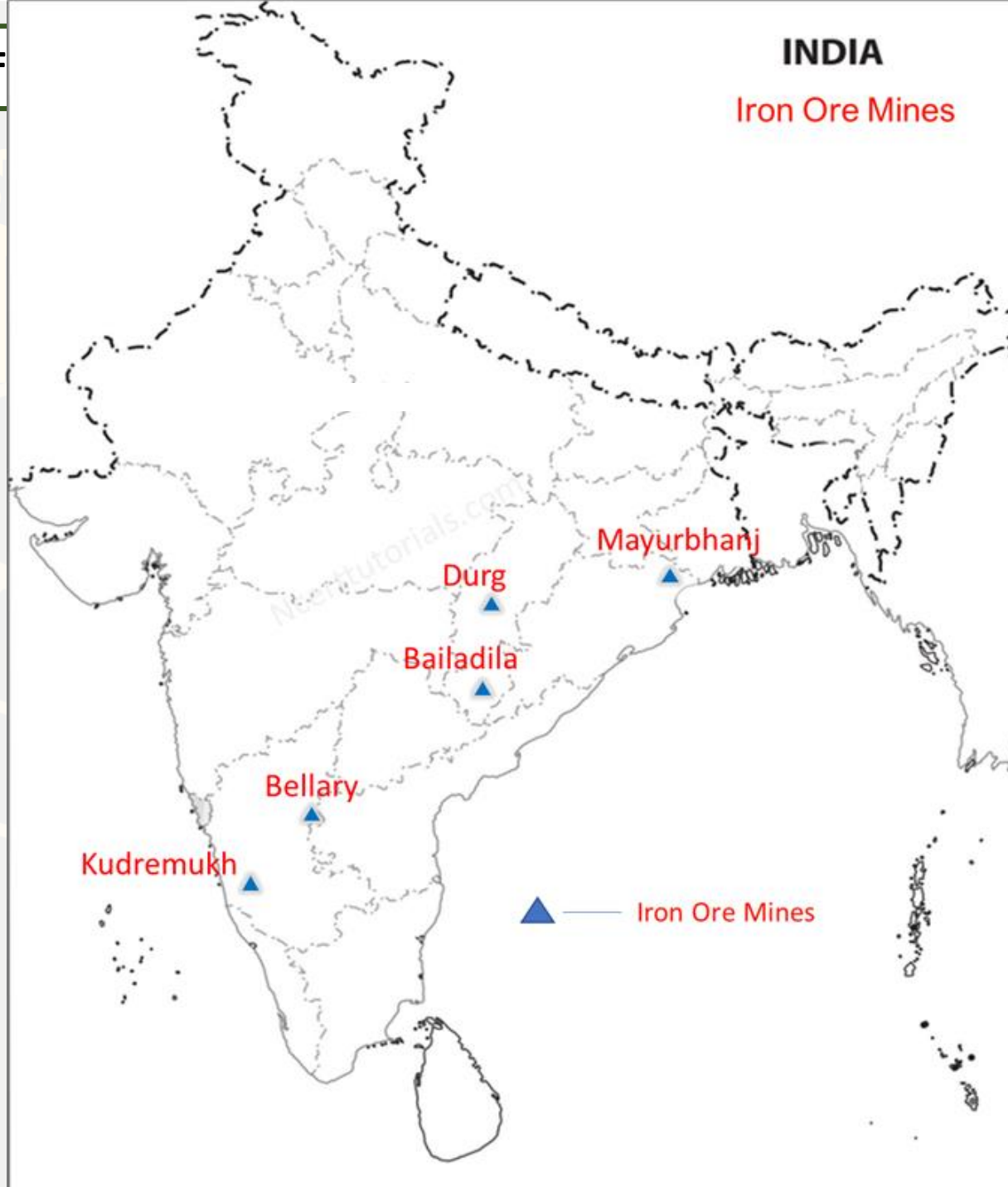
- Chemical reactions make and break the chemical bonds between molecules, resulting in new materials as the products of the chemical reaction. .  
Breaking chemical bonds absorbs energy, while making new bonds releases energy, with the overall chemical reaction being endothermic or exothermic.
- रासायनिक प्रतिक्रियाएं अणुओं के बीच रासायनिक बंधन बनाती हैं और तोड़ती हैं, जिसके परिणामस्वरूप नई सामग्री रासायनिक प्रतिक्रिया के उत्पादों के रूप में होती है। । रासायनिक बांडों को तोड़ना ऊर्जा को अवशोषित करता है, जबकि नए बांड ऊर्जा को जारी करते हैं, जिसमें समग्र रासायनिक प्रतिक्रिया एंडोथर्मिक या एक्सोथर्मिक होती है।



- Maximum iron ore is found in which of the following states?
  - निम्नलिखित में से किस राज्य में अधिकतम लौह अयस्क पाया जाता है?
- A)  $\text{FeCO}_3$
  - B)  $\text{Fe}_2\text{O}_3$
  - C)  $\text{Fe}_3\text{O}_4$
  - D)  $\text{FeS}_2$

• ans:B







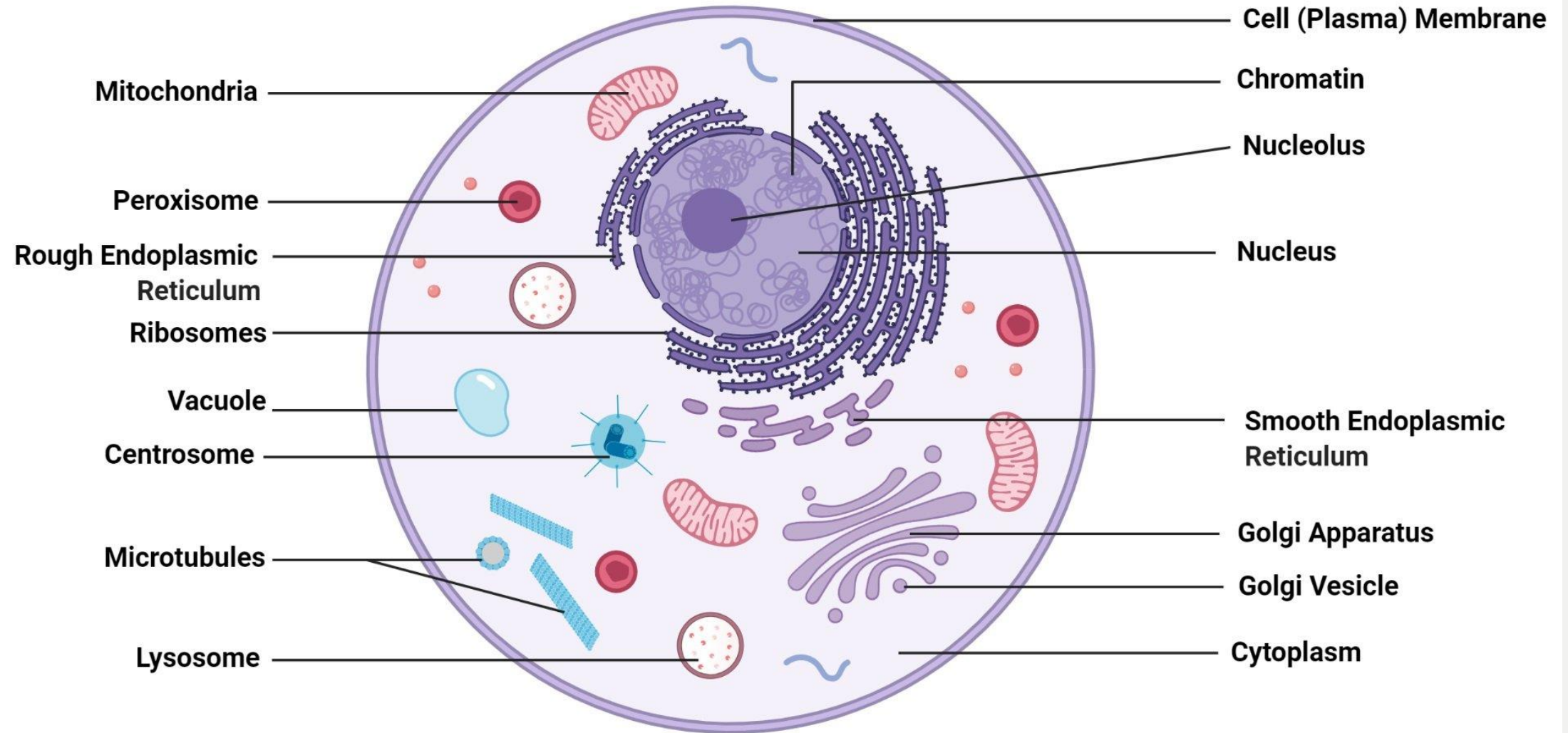
Metal	Mineral	Formula
Gold	Native Gold	Au
Silver	Argentite (in Galena)	Ag <sub>2</sub> S
Copper	Malachite	Cu <sub>2</sub> CO <sub>3</sub> (OH) <sub>2</sub>
	Azurite	Cu <sub>3</sub> (CO <sub>3</sub> ) <sub>2</sub> (OH) <sub>2</sub>
	Chalcopyrite	CuFeS <sub>2</sub>
Mercury	Cinnabar	HgS
Iron	Hematite	Fe <sub>2</sub> O <sub>3</sub>
	Magnetite	Fe <sub>3</sub> O <sub>4</sub>
	Pyrite	FeS <sub>2</sub>
Tin	Cassiterite	SnO <sub>2</sub>
Lead	Galena	PbS



- The spherical structured organelle that contains the genetic material is?
- आनुवंशिक संरचना वाले गोलाकार संरचित ऑर्गनेल है?
  - A) Mitochondria
  - B) Ribosome
  - C) Cell Walls
  - D) Nucleus

• **Ans:D**

# Animal Cell Structure





- Prokaryotic genetic system has
- प्रोकैरियोटिक आनुवंशिक प्रणाली है
  - A) Both DNA and Histones
  - B) DNA but no Histones
  - C) Neither DNA nor Histones
  - D) Either DNA or Histones
- **Ans:B**



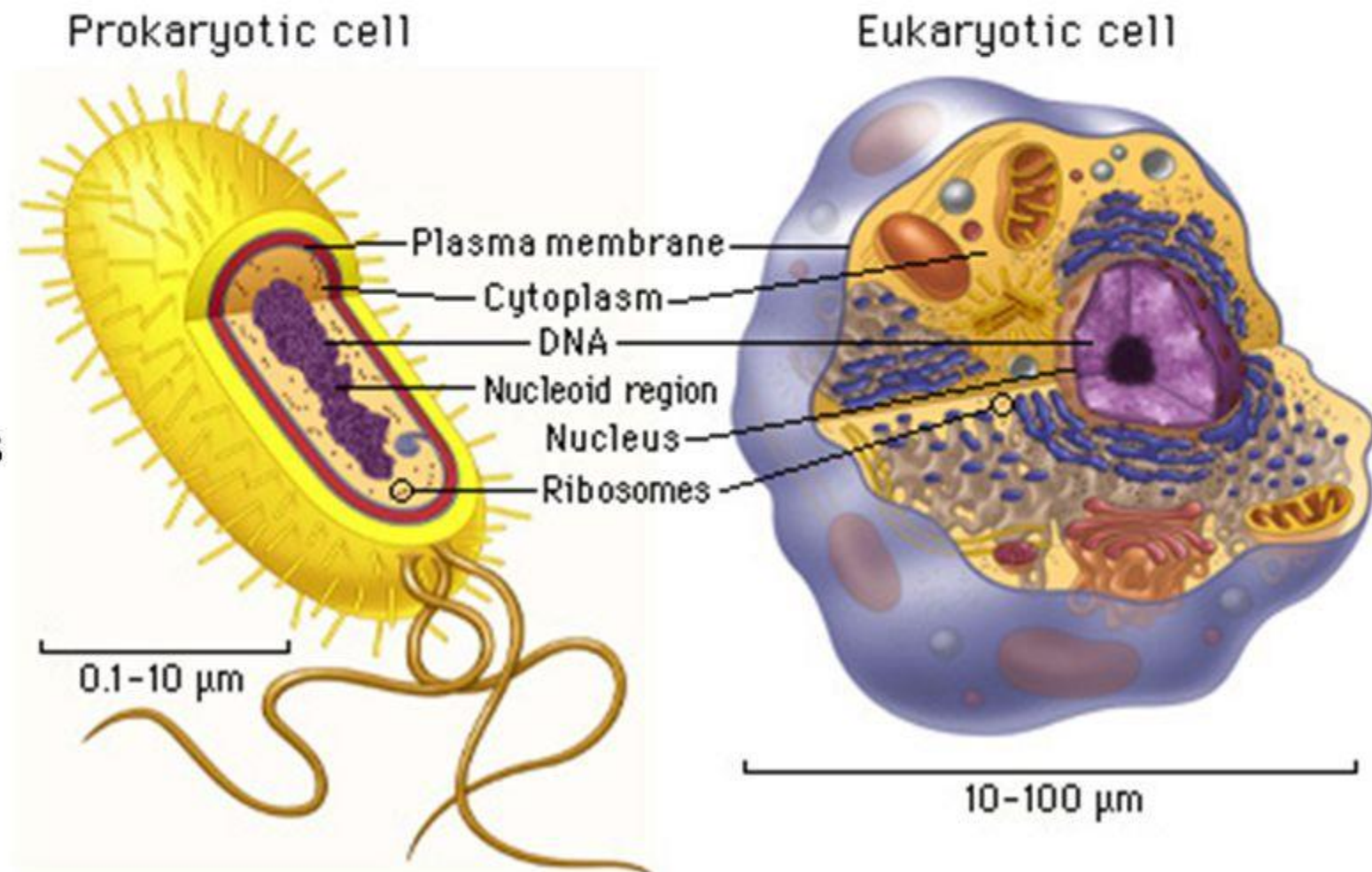
# (4) Types of Cells

- Prokaryotic Cells:

- Cells without a nucleus.
- Example = Bacteria

- Eukaryotic Cells

- Cells with a nucleus.
- Example = Plant + Animal Cells





- Cell sap is a?
- सेल सैप है?
  - A) Non living Content of the Vacuole
  - B) Living Content of the Cell
  - C) Non living Content of the Protoplasm
  - D) Living Content of the Cytoplasm

• Ans:A

**Cell sap is a non living component which mainly functions for storage**



**Sap**, watery fluid of **plants**. **Cell sap** is a fluid found in the vacuoles (small cavities) of the living **cell**; it contains variable amounts of food and waste materials, inorganic salts, and nitrogenous compounds. ... Phloem, or sieve-tube, **sap** is the fluid carrying sugar from leaves to other parts of the **plant** in the summer.







- Which among the following is measured using a Vernier Calliper?
- निम्नलिखित में से कौन वर्नियर कैलिपर का उपयोग करके मापा जाता है?
  - A) Dimension
  - B) Sound
  - C) Time
  - D) Temperature
- **Ans:A**



**Mahendra's**

FOR MORE DISCOUNT VISIT [www.mahendras.org](http://www.mahendras.org) & USE PROMO CODE :





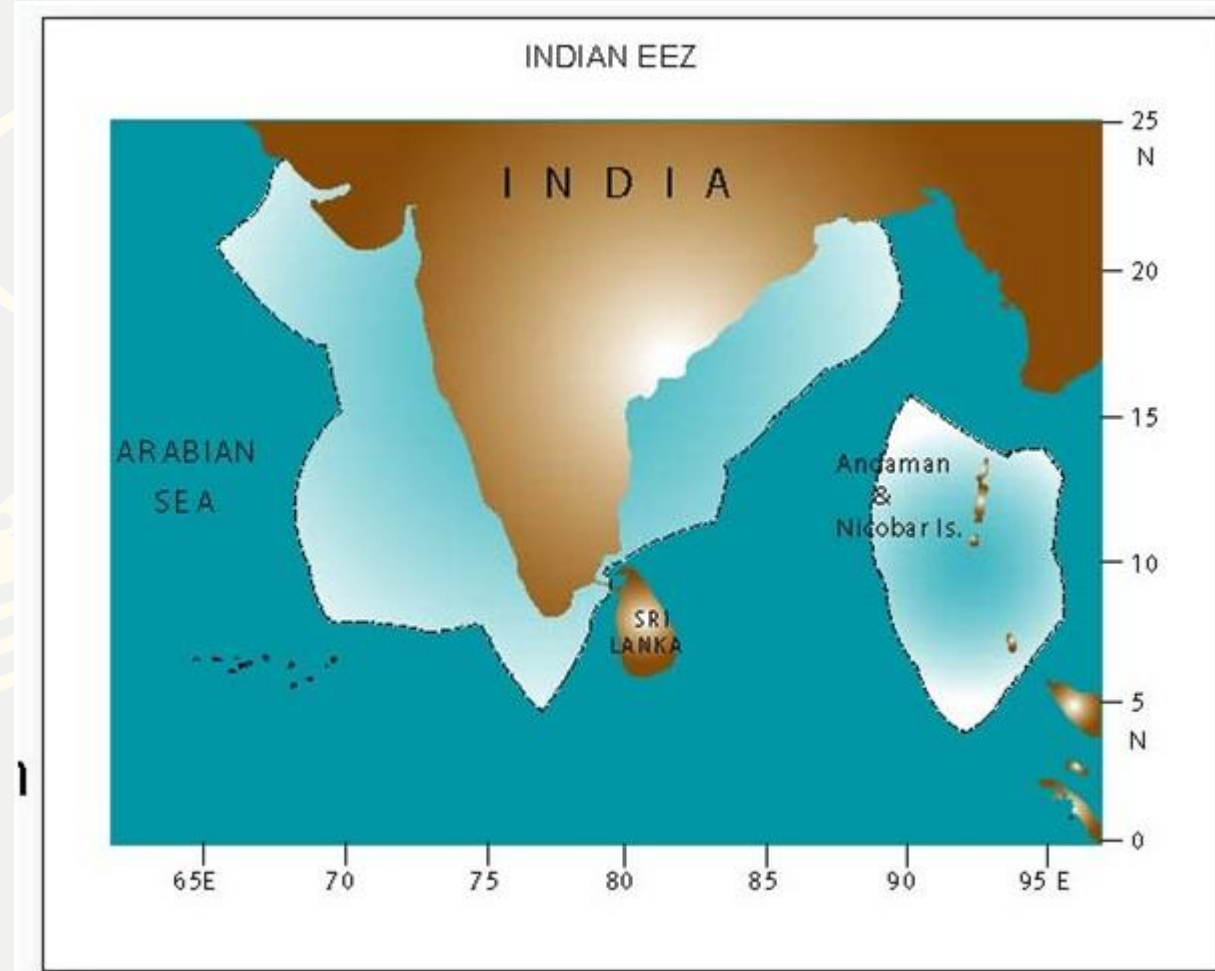
- **Knot is the measuring unit of?**

- A) Speed
- B) Distance
- C) Accelaration
- D) Deapth

- **Ans:A**



- The **knot** is a unit **of** speed equal **to** one nautical **mile** per hour, exactly 1.852 **km/h**





- Which among the following temperature scale is based upon absolute zero?
- निम्नलिखित तापमान पैमानों में से कौन सा पूर्ण शून्य पर आधारित है?
  - A) Rankine
  - B) Kelvin
  - C) Celsius
  - D) Farhenite

• **Ans:B**



- “Svedberg Unit” is a unit of
- स्वेडबर्ग यूनिट ”की एक इकाई है
  - A) Concentration
  - B) Time
  - C) Density
  - D) Size
- **Ans:B**



- Which of the following is NOT a unit for measuring pressure?
- निम्नलिखित में से कौन दबाव को मापने के लिए एक इकाई नहीं है?
  - A) Bar
  - B) Shake
  - C) Pascal
  - D) Torque

• **Ans:B**



The table below shows the different commonly used units of measuring gas pressure. Use this table in the pressure unit conversions.

Unit	Abbreviation	1 atm equivalent
atmosphere	atm	1.00 atm (exact)
millimeters of mercury	mmHg	760 mmHg
torr	torr	760 torr
inches of mercury	in. Hg	29.9 in. Hg
pounds per square inch (psi)	lb/in. <sup>2</sup>	14.7 lb/in. <sup>2</sup>
pascal	Pa	101,325 Pa



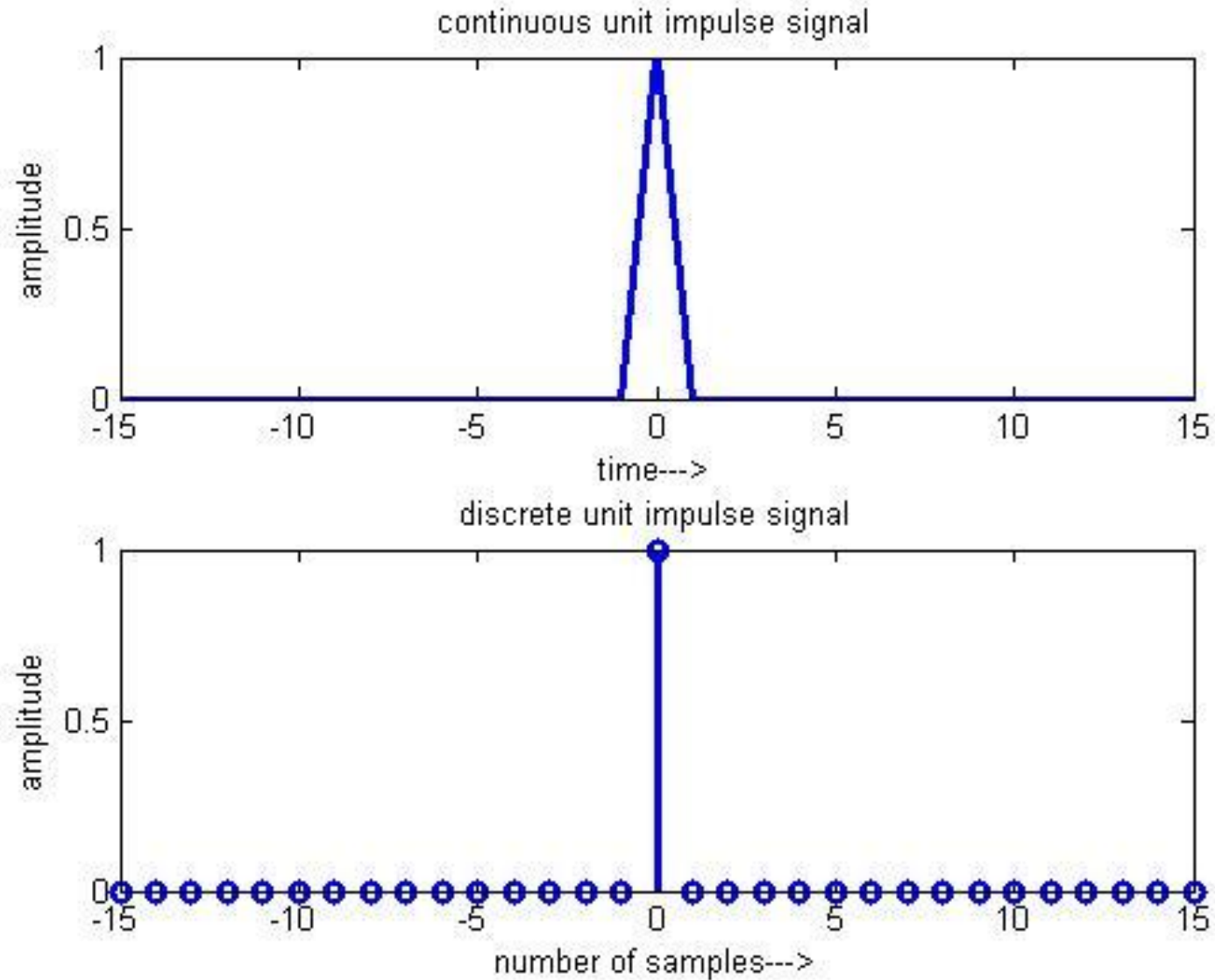


- Which of the following is the unit of Impulse?
- निम्नलिखित में से कौन आवेग की इकाई है?
  - A) N
  - B) Ns
  - C) N/s
  - D) Ns<sup>-2</sup>
- **Ans:B**

# What are the units for impulse?

□ Units =  $\text{N}\cdot\text{s}$  or  $\text{kg}\cdot\text{m}/\text{s}$

Measurement	Unit
Distance	Meters (m)
Time	Seconds (s)
Velocity	$\text{m}/\text{s}$
Acceleration	$\text{m}/\text{s}^2$
Force	Newton (N) ( $\text{kg}\cdot\text{m}/\text{s}^2$ )
Momentum	$\text{Ns}$ or $\text{kg}\cdot\text{m}/\text{s}$
<b>Impulse</b>	<b><math>\text{N}\cdot\text{s}</math> or <math>\text{kg}\cdot\text{m}/\text{s}</math></b>





- The symbol Sb stands for stibnum or stibnite. What is the modern name of this element?
- प्रतीक Sb stibnum या stibnite के लिए खड़ा है। इस तत्व का आधुनिक नाम क्या है?
  - A) Arsenic
  - B) Tin
  - C) Antimony
  - D) Samarium
- **Ans:c**



- DNA codes for proteins, which are the building blocks of organisms. What is the most abundant protein in the human body?
- प्रोटीन के लिए डीएनए कोड, जो जीवों के निर्माण खंड हैं। मानव शरीर में सबसे प्रचुर मात्रा में प्रोटीन क्या है?
  - A) Tubulin
  - B) Collagen
  - C) Keratin
  - D) Albumin
- **Ans:B**



- One of the essential minerals in the human body is salt. How much salt (NaCl) is in the average adult human body?
- मानव शरीर में आवश्यक खनिजों में से एक नमक है। औसत वयस्क मानव शरीर में कितना नमक (NaCl) है?
  - A) 250 gm
  - B) 1kg
  - C) 2kg
  - D) 500 gm
- **Ans:A**



- Organic chemistry is the study of the compounds that make up living organisms. All organic molecules contain?
- कार्बनिक रसायन उन यौगिकों का अध्ययन है जो जीवित जीवों को बनाते हैं। सभी कार्बनिक अणु होते हैं?
  - A) Carbon, Hydrogen and Oxygen.
  - B) Carbon Only
  - C) Carbon and Hydrogen
  - D) Carbon and Nitrogen

• **Ans: B**

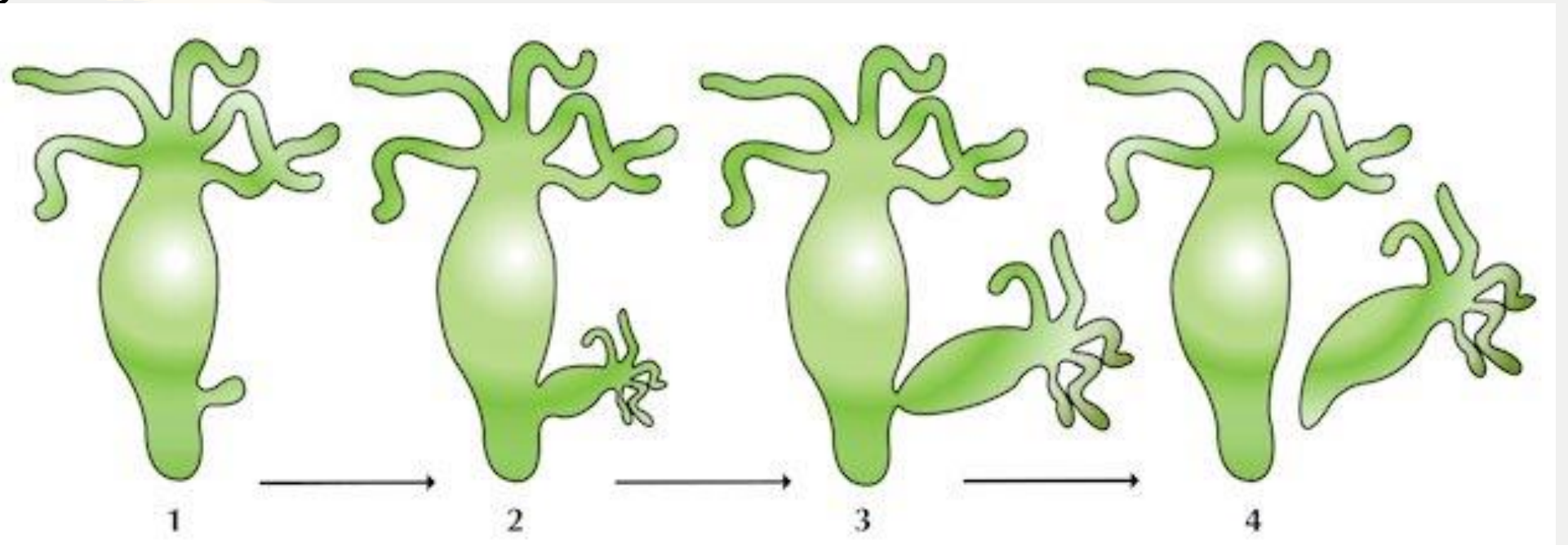


- One of the following does not reproduce by budding. This is
- निम्नलिखित में से एक नवोदित द्वारा पुनः पेश नहीं करता है। यह है
  - A) Yeast
  - B) Planaria
  - C) Sponge
  - D) Hydra
- **Ans: B**





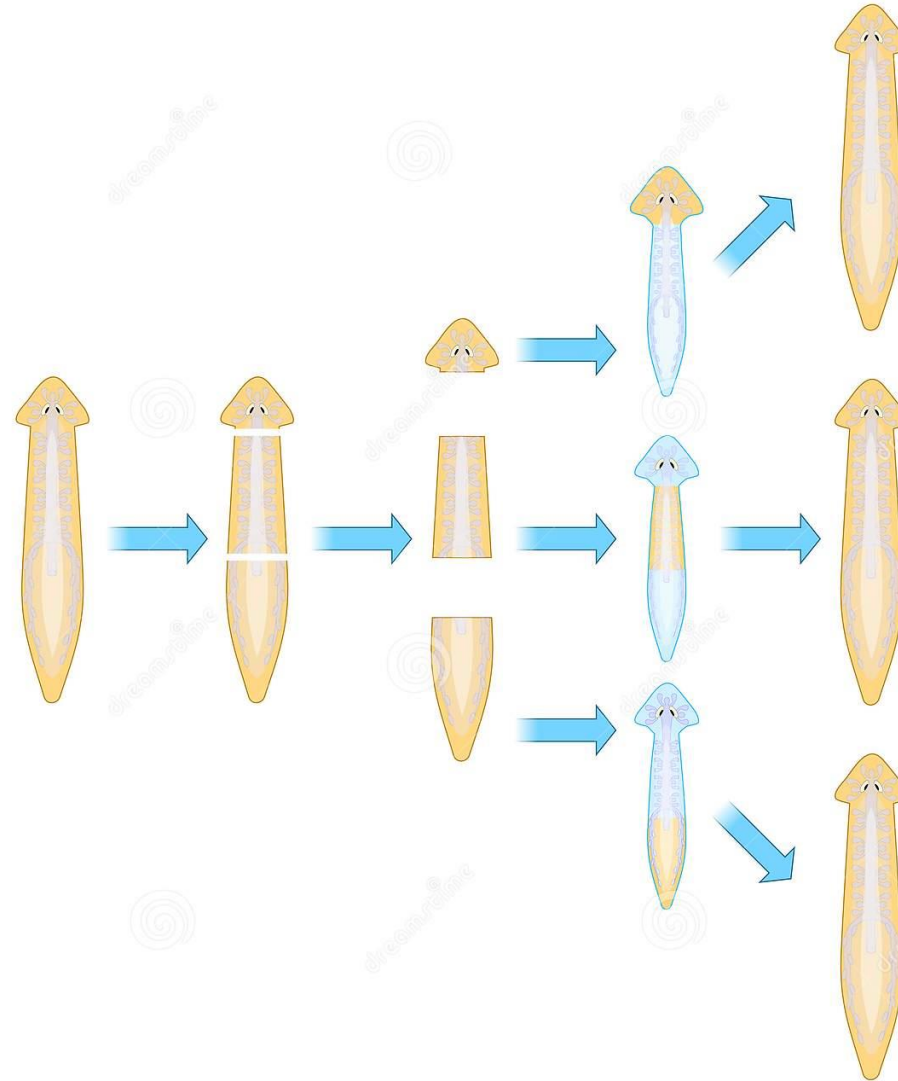
- Budding





# PLANARIA

reproduce by regeneration





- The velocity of the sound is highest in?
- ध्वनि का वेग सबसे अधिक है?
  - (a) Metal
  - (b) Air
  - (c) Water
  - (d) Vacuum
- **Ans:a**

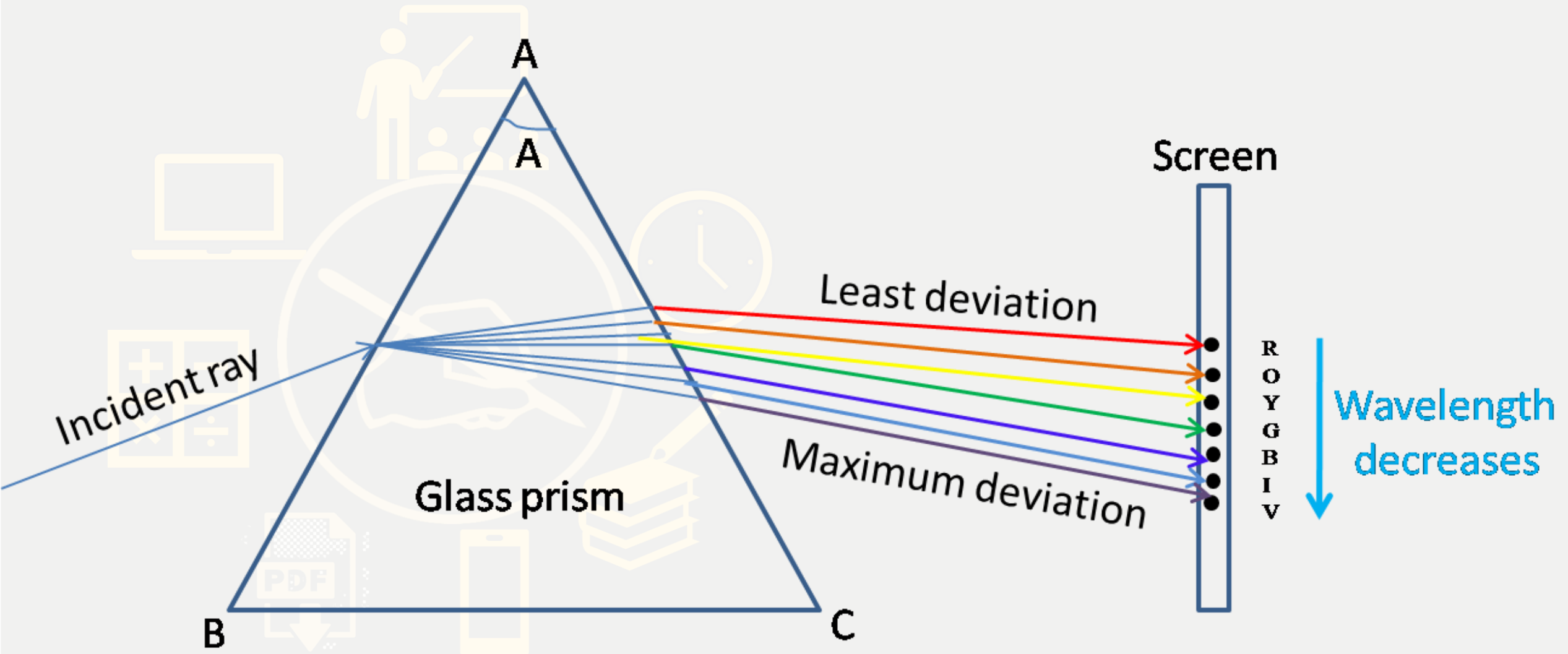


- Which color deviates highest when passing through a Prism
- प्रिज्म से गुजरते समय कौन सा रंग सबसे अधिक विचलित होता है
  - (a) Indigo
  - (b) Green
  - (c) Violet
  - (d) Orange
- **Ans:c**



**Mahendra's**

FOR MORE DISCOUNT VISIT [www.mahendras.org](http://www.mahendras.org) & USE PROMO CODE :





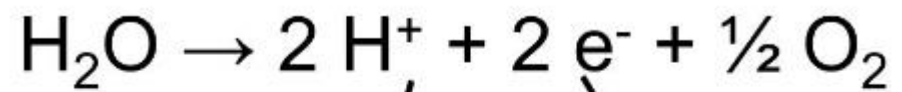
- Increased RBC's in the blood leads to a condition called
- रक्त में आरबीसी की वृद्धि से एक स्थिति पैदा होती है जिसे कहा जाता है
  - (a) Anemia
  - (b) Haemophilia
  - (c) Polycythemia
  - (d) Leukaemia

• **Ans:c**



- The production of oxygen during photosynthesis is due to
- प्रकाश संश्लेषण के दौरान ऑक्सीजन का उत्पादन होता है
  - (a) hydrolysis of carbohydrates
  - (b) photolysis of water
  - (c) reduction of CO<sub>2</sub>
  - (d) breakdown of chlorophyll

• **Ans:b**



NADP

Reduced NADP

Photosystem II

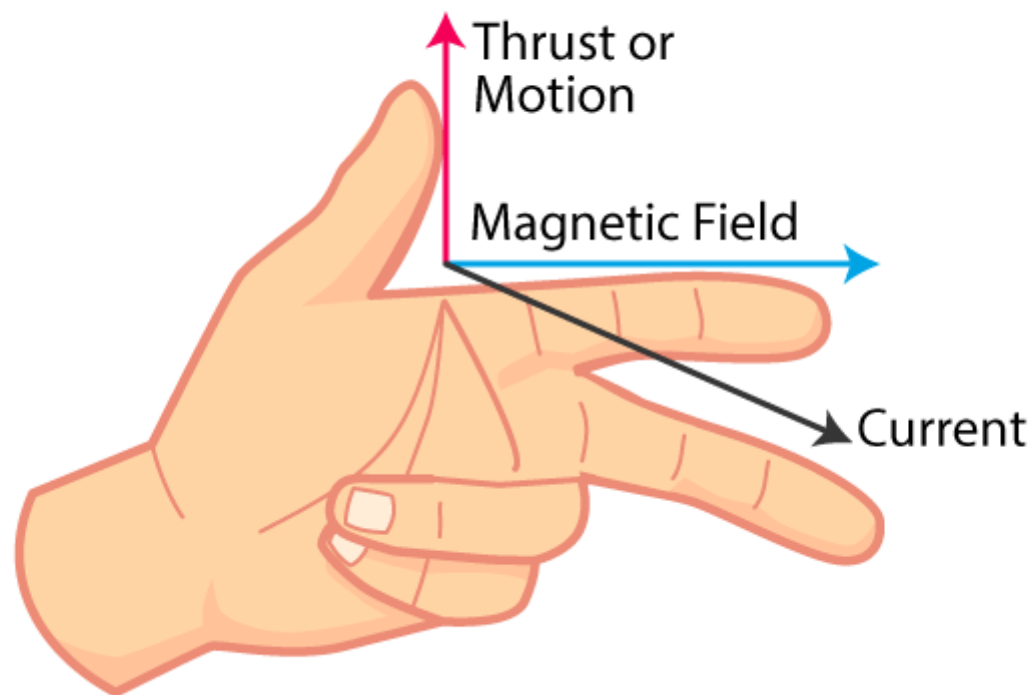




- In a magnetic field, the direction of motion of a current carrying conductor is given by
- एक चंबकीय क्षेत्र में, एक ले जाने वाले कंडक्टर की गति की दिशा किसके द्वारा दी जाती है
  - (A) Maxwell's right hand rule
  - (B) Lenz's rule
  - (C) Flemings left hand rule
  - (D) Kirchhoff's law
- **Ans:c**



## FLEMING'S LEFT HAND RULE





- Sound waves do not show the phenomenon of
- ध्वनि तरंगों की घटना नहीं दिखती है
- (A) refraction
- (B) interference
- (C) diffraction
- (D) polarisation
- **Ans:d**



## Practice Question

- The lift of an aeroplane is caused by
- एक हवाई जहाज की लिफ्ट के कारण होता है
  - (A) Law of gravitation
  - (B) Theorem of continuity
  - (C) Pascal's law
  - (D) Bernoulli's theorem



# UPCOMING ONLINE BATCHES MAY 2021

 1800-103-5225

05 May 2021

08:00 AM to 10:00 AM

**LIVE PREMIUM  
SILVER CARD**  
(CGL & CHSL)

03:00 PM to 05:00 PM

**LIVE PREMIUM  
GREEN CARD**  
(IBPS PO & CLERK)

**BILINGUAL**

12 May 2021

01:00 PM to 03:00 PM

**LIVE PREMIUM  
SILVER CARD**  
(CGL & CHSL)

05:30 PM to 07:30 PM

**LIVE PREMIUM  
GREEN CARD**  
(IBPS PO & CLERK)

**BILINGUAL**

19 May 2021

10:30 AM to 12:30 PM

**LIVE PREMIUM  
SILVER CARD**  
(CGL & CHSL)

01:00 PM to 03:00 PM

**LIVE PREMIUM  
GREEN CARD**  
(IBPS PO & CLERK)

**BILINGUAL**

26 May 2021

07:30 PM to 09:30 PM

**LIVE PREMIUM SILVER CARD**  
(CGL & CHSL)

08:00 AM to 10:00 AM

**LIVE PREMIUM GREEN CARD**  
(CGL & CHSL)

05:30 PM to 07:30 PM

**LIVE PREMIUM SILVER CARD**  
(CGL & CHSL)

**BILINGUAL**

10:30 AM to 12:30 PM

**LIVE PREMIUM  
GREEN CARD**  
(IBPS PO & CLERK)

**ENGLISH MEDIUM**

03:00 PM to 05:00 PM

**LIVE PREMIUM  
SILVER CARD**  
(CGL & CHSL)

**ENGLISH MEDIUM**

07:30 PM to 09:30 PM

**LIVE PREMIUM  
GREEN CARD**  
(IBPS PO & CLERK)

**ENGLISH MEDIUM**

PDF



**Mahendra's**

FOR MORE DISCOUNT VISIT [www.mahendras.org](http://www.mahendras.org) & USE PROMO CODE : **E13830**

## Don't Let Your Studies Get Impacted By COVID-19 Pandemic

Stay Home & Study Online With Mahendras Hybrid Model

### Features :



Offline  
Classes



Live Interactive  
Online Classes



Same  
Faculty



Same  
Batch



Same  
Batch Timing



Online Library  
Facility



Recorded  
Video



PDFs



Classes In  
Both Model

CONTACT US:

1800-103-5225



# THANK YOU