

**MATHS**



**SBI CLERK**



# **SPEED , TIME & DISTANCE**

**PART -3**

**DAY - 3**

**9:00 AM**

**Mahendra's**

GET COMPLETE ST SOLUTION WITH- **VIDEO BOX**



FINE TUNE YOUR T

Subscribe  
NOW



BOOST YOUR PREPARATIONS WITH MAHENDRAS: STUDY MATERIAL, E-MICA, E-NEWS, BAGS & MUCH MORE. VISIT NOW: [www.mahendras.com](http://www.mahendras.com)

# RAILWAY NTPC PRE CRASH COURSE



Reasoning

Maths

G.S.

Batch Start Date

29-May-19

Batch Start Time

10:30 AM TO 12:30 PM

MRP  
~~₹4000~~

Offer Price

₹999

Visit - [myshop.mahendras.org](http://myshop.mahendras.org)

 *Mahendra's*

BUY FROM  
[myshop.mahendras.org](http://myshop.mahendras.org)

30<sup>th</sup> MAY 10:00 AM TO 31<sup>th</sup> MAY 11:59 PM

6 Months Validity

SPEED TESTS

₹99

12 Months Validity

SPEED TESTS

₹199

99

SALE

All In One

ONE YEAR ST

₹399

All In One

TWO YEAR ST

₹499

Video Guru

SUBJECT WISE

₹399

Video Guru

COMBO

₹499

Video Guru

ALL IN ONE


₹999

 *Mahendra's*

GET COMPLETE ST SOLUTION WITH- **VIDEO BOX**



FINE TUNE YOUR T<sup>l</sup>

Subscribe  
NOW 

BOOST YOUR PREPARATIONS WITH MAHENDRAS: STUDY MATERIAL, E-MICA, E-NEWS, BAGS & MUCH MORE. VISIT NOW: [myshop.mahendras.org](http://myshop.mahendras.org)

USE  
PROMO CODE  
**MCOMBOAJTSCX**  
TO GET **5%**  
ADDITIONAL  
OFF

COMBO  
VIDEO  
GURU

A colorful promotional graphic with a red central circle containing the text 'USE PROMO CODE MCOMBOAJTSCX TO GET 5% ADDITIONAL OFF'. To the left is a smaller orange circle with 'COMBO VIDEO GURU' and a play button icon. The background features overlapping orange, blue, and purple circles and a light beige textured surface.

USE  
PROMO CODE  
**BOOSTMA68202**  
TO GET **5%**  
ADDITIONAL  
OFF

SINGLE  
VIDEO  
GURU


A colorful promotional graphic with a yellow central circle containing the text 'USE PROMO CODE BOOSTMA68202 TO GET 5% ADDITIONAL OFF'. To the left is a smaller orange circle with 'SINGLE VIDEO GURU' and a play button icon. The background features overlapping orange, blue, and purple circles and a light beige textured surface.

 **Mahendra's**

GET COMPLETE ST SOLUTION WITH- **VIDEO BOX**



FINE TUNE YOUR T<sup>l</sup>

Subscribe  
NOW 

BOOST YOUR PREPARATIONS WITH MAHENDRAS: STUDY MATERIAL, E-MICA, E-NEWS, BAGS & MUCH MORE. VISIT NOW: [m](#)

point C. Find the distance between B and C./

A B X Y B A 15 / 9 / 40

B A , X Y

B C

1. 5 km.
2. 15 km.
3. 30 km.
4. 35 km.
5. NOT



Lokesh ashok Jangir 21 hours ago  
35km...



Piyasha Mondal 11 hours ago  
sir ans is 35km



RAJESH KUMAR PAL 19 hours ago  
35Km will be the right answer



Sagar Singh 20 hours ago  
answer to homework question is 35 km



Shilpam Tripathi 14 hours ago  
Home work 35 answer.



Rakesh Kumar Das 8 hours ago  
Homework ans 35km



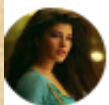
manaswini jena 19 hours ago  
Sir homework ka ans 35km



Rahul Gomase 20 hours ago  
Home work  
Ans- 35 km distance



deeptilata topno 21 hours ago  
35



TANU RAJPUT 22 hours ago  
4) 35 km



ncert understanding 11 hours ago  
Ans-BC=35km  
AC=5km



Amit Kc 19 hours ago  
Guru ji distance b/w a&c is 5km and b&c is 35km.  
Ur session was so beneficial to all.  
Thanks a lot sir



Shaurya Raghuvanshi 18 hours ago  
Ans of homework ques is 35 km



love kush 21 hours ago  
35km



dipika kumari 20 hours ago  
Option 4)35 km



UJWAL ARORA 21 hours ago  
35 km



Vishakha Sharma 18 hours ago  
35 Km



Bysani Maneesha 20 hours ago  
35km



NEHA AGARWAL 19 hours ago  
ANS IS 35KM SIR TYSM 🙏👍



Harshit Srivastav 21 hours ago  
35 km



Akash Gupta 11 hours ago  
35 km



Rishabh Shivhare 10 hours ago  
35kmh



vineet pratap rahul 19 hours ago  
35 km distance between B and C  
5 km distance between A and C

A and B start simultaneously in the same direction with speeds of 6 km/hr and 12 km/hr. A car from behind passes them in 9 and 10 seconds respectively. What is the speed of the car?/ A      B      6      /

12

/

9

10

?

1. 33

2. 44

3. 55

4. 66

5. NOT

# Basic concept

 **Mahendra's**

GET COMPLETE ST SOLUTION WITH- **VIDEO BOX**



FINE TUNE YOUR T

Subscribe  
NOW 

BOOST YOUR PREPARATIONS WITH MAHENDRAS: STUDY MATERIAL, E-MICA, E-NEWS, BAGS & MUCH MORE. VISIT NOW: [m](#)

Ankit arrives at a bank 10 minutes earlier than schedule time if drives his car at 40 km/hr. He arrives 5 minutes late if he drives his car at 35 km/hr. The distance between bank and his house is: /

$$\frac{40}{5} - \frac{35}{10} = \frac{x}{60}$$

1. 35 km.
2. 70 km.
3. 105 km.
4. 140 km.
5. NOT

Ajay reaches school 10 minutes late than schedule time if he walks at a speed of 4 km/hr. He will reach 4 minutes late if he walks at 5 km/hr. The distance of the school from his house is: /

$$\frac{5}{10} : \frac{4}{4}$$

1. 1 km.
2. 1.5 km.
3. 2 km.
4. 2.5 km.
5. NOT

If a man travels at a speed of 40 km/h, he reaches his destination late by 11 minutes but when he travels at a speed of 50 km/h, he reaches his destination late by 5 minutes.

The correct time taken by man to complete his journey :/ 40 /  
 , 11 , 50  
 / , 5  
 :

1. 30 min.
2. 24 min.
3. 19 min.
4. 13 min.
5. NOT

Santosh and Basant start from point A with speeds of 18 km./hr. and 27 km./hr. respectively, and reach another point B. If Basant starts 90 minutes after Santosh from A and reaches B 30 minutes before Santosh, what is the distance between A and B?/

18 / 27 / A  
 , B A 90  
 30 B , A B ?

1. 96

2. 108

3. 120

4. 140

5. NOT

A boy goes to school with a speed of 3 km/hr and returns to the village with a speed of 2 km/hr. If he takes 5 hours in all, the distance between the village and the school is: / 3 / 2 / 5 ,

1. 6 km.
2. 7 km.
3. 8 km.
4. 9 km.
5. 10 km.

A man covered a certain distance at some speed. Had he moved 3 km per hour faster, he would have taken 40 minutes less. If he moved 2 km per hour slower, he would have taken 40 minutes more. The distance ( in km ) is : /

$$40 \quad \frac{3}{2} \quad 40$$

( . ) :

1. 20 km.
2. 30 km.
3. 36 km.
4. 40 km.
5. NOT

A man covered a certain distance at some speed. Had he moved 10 km per hour faster, he would have taken 24 minutes less. If he moved 5 km per hour slower, he would have taken 16 minutes more. The distance ( in km ) is : /

$$24 \quad \frac{10}{5} \quad 16$$

( . ) :

1. 100 km.
2. 120 km.
3. 60 km.
4. 50 km.
5. NOT

Two guns are fired from the same place at an interval of 4.5 min. A person approaching the Place observe that 4 min-24 sec. have elapsed between the hearing of the sound of the two guns. If the velocity of the sound is 330 m/sec. At what speed (in km/hr) man was approaching that place?/ 4.5

$$\left( \frac{4}{330} - \frac{4.5}{330} \right) \times 3600 = ?$$

1. 7.5

2. 15

3. 25

4. 27

5. NOT



**LIKE**

**COMMENT**

**SHARE**

**SUBSCRIBE**