



# SBI CLERK 2021



Share Like

ENGLISH

→ ✓

## Verb Through Question (Day 2)



LIVE 9:30 AM



✓ Primary — 3rd May → (1)

2nd

# SYNTAX ERROR

(agreement of verb with subject)

Dabashree needed it.

- Ram and not his brothers has/have

## NOTES

✓ data --- has/is ✓  
 Plural  
 Numbers

① Sub (Singular) = Verb (Singular)

② Sub (Plural) = Verb (Plural).

③ ----- S<sub>1</sub> connector S<sub>2</sub> ----- (Verb)

① with/along with  
 as well as, like,  
 unlike, in addition to  
 besides, and not.

① S<sub>1</sub> will decide the  
 verb & the pronoun.

② or, nor,  
 Either-or,  
 Neither-nor  
 Not only - but also

② S<sub>2</sub> will decide  
 the verb &  
 the pronoun.

and  
 • Single unit - Singular  
 • Indi- } Plural  
 vidual  
 Units

Nitu

Share

Max

① "Each & Every" comes before a subject  
— Singular Verb

② Sentence starting with — here/there.  
→ Verb + Sub (Verb depends on sub)

③ Several, Both, many, few are all  
plural → Verb (Plural)

## QUESTION

Each  
↓  
min 2

1:30

Every  
↓  
3 min

1) Each man and woman ~~have~~ the  
right to vote.

2) Here is the keys, you were looking  
for. verb sub

3) Several company ~~has~~ announced  
one year work from home for its  
employees.

Share

④ Each, Every, Any, None, (etc) — are always  
Singular = Singular Verb.

⑤ ✗ 1st slide

⑥ Any fraction  $\frac{N}{D}$  — plural ✓

→ will always be considered as  
singular = Singular Verb

→ same concept for  
(%)

## QUESTION

1:30

$\frac{10}{8}$

Like

4) Everybody ~~know~~ <sup>knows</sup> him to be the most intelligent boy of our class.

5) Either the man or his friends ~~has~~ <sup>have.</sup> done this to save the boy. S<sub>2</sub>

6) ~~Two-third~~ <sup>s</sup> of the village ~~have~~ <sup>has</sup> been ruined.

7) Generic references will always be followed by plural verb.

→ word indicating an entire community.

8) Whenever subjects are connected by any connector consisting of the term "not"

do not ever consider the sub after the term "not" — to decide the Verb

9) Slide 1

## QUESTION

1:30

Share

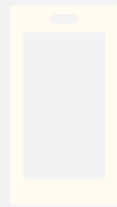
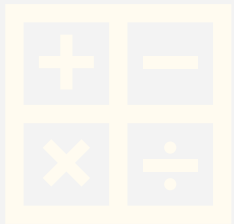
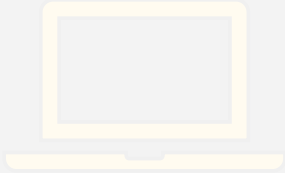
7) The rich ~~is~~ <sup>are</sup> not always happy.

8) Not ~~she~~ but her family members wants her to be a government employee.

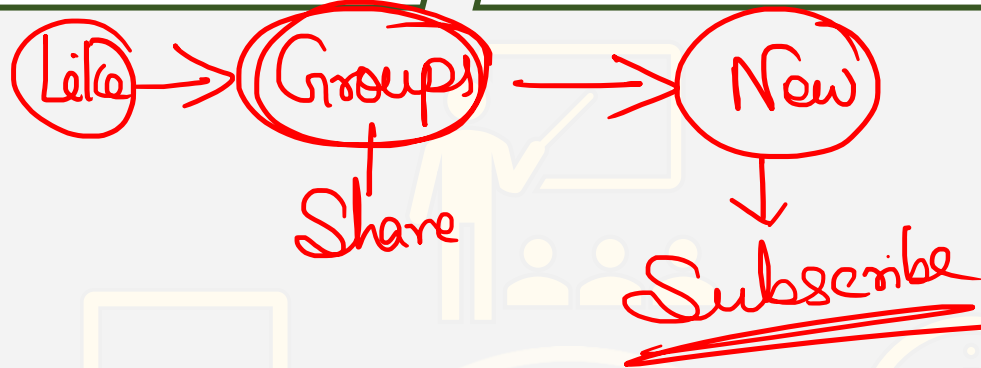
9) You (as well as) your brothers were absent yesterday.

You ~~was~~ were

Chap ✓



# EXAM TYPE QUESTIONS



# QUESTION 1

0:30

The new policy launched (A)/ by the LIC proved to be beneficial (B)/ for the very new connected customer (C)/ as it is generating good revenue.(D)/ no error (E)

newly

## QUESTION 2

0:30

More than one stakeholder (A)/ <sup>Singular</sup> ~~have~~ <sup>has</sup> started investing (B)/ in this project (C)/ after this second wave of COVID-19. (D)/ no error (E)

## QUESTION 3

0:30

In the branch model the (A)/ the election commission is often called an (B)/ ~~electoral branches~~ and are usually (C)/ a constitutionally recognized separate branch of government. (D)/ no error (E)

One

is

## QUESTION 4

0:30

*along with*  
*Q1*

*✓*

*no error.*

In this meeting ~~were~~ present(A)/ our  
prime minister along with some of (B)/  
the delegates of (C)/ his party to find  
the solution of this crisis.(D)/ no error  
(E)

One of

└─ degree — Superlative  
└─ Sub — Plural  
└─ Verb = Singular ✓

(Unless there is  
a Relative  
Pronoun)

## QUESTION 5

0:30

The government has banned one (A)/ of its housing scheme in urban areas (B)/ after finding it (C)/ incompatible to people. (D)/ no error (E)

*Scheme.*

NOUN



SP8

## QUESTION 6

0:30

Sub (Singular)

~~plural~~

A person using virtual reality (A)/  
equipment is able to look (B)/ around  
the artificial world and interact (C)/  
with features and items depicted in the  
headset. (D)/ no error (E)

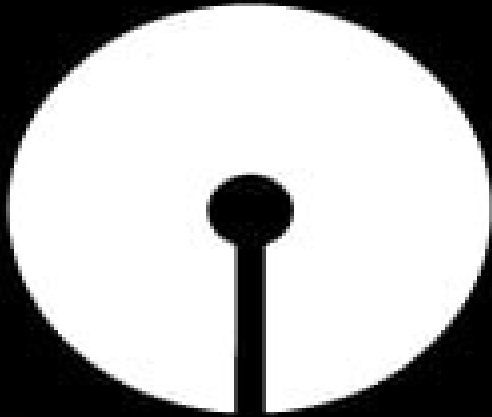
interacts.

## QUESTION 6

0:30

A person using virtual reality(A)/  
equipment is able to look (B)/ around  
the artificial world and interact (C)/  
with features and items depicted in the  
headset.(D)/ no error (E)

# TEST SERIES Bilingual



## SBI CLERK 2021

### Course Highlights

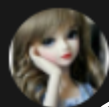
- ✓ 200+ Total Tests with Detailed Solutions
- ✓ Full Length Mocks with Video solutions
- ✓ English & Hindi Medium
- ✓ eBooks



## 200+ Total Tests | E-Books

# MOST ACTIVE STUDENTS

*Sum*



Palak Shukla 21

Homework ans

- 1) Amass—  
Syn. - Collect  
Ant - Dissipate  
2) Acrimonious  
Syn. - Harsh  
Ant.- happy  
3) Anomaly —  
Syn. - Irregular  
Ant.- Regular

Thankyou ma'am 🙏😊😊

Show less

👍 1 🗨️ REPLY

*1st*



Arpita Roy 22 hours ago

Amass.. sy... assemble

Ant.... separate

Acrimonious...sy.....harsh

Ant... gentle

Anomaly.....sy..... abnormal

Ant.....usual/n

Show less

👍 🗨️ REPLY

*3rd*



Anand Shukla 6 hours ago

Amass=Syn: Collect /Ant: Dissipate

Acrimonious=Syn: Harsh/ Ant: happy

Anomaly=Syn: Irregular/Ant:Regular

*4th*



Shivam Tiwari 22 hours ago

Homework Answer—

1) Amass—  
Synonym - gather  
Antonym - dissipate

2) Acrimonious—  
Synonym - bitter  
Antonym - gentle

3) Anomaly—  
Synonym - oddity  
Antonym - average

Awesome Session Ma'am Thankyou

Show less

👍 2 🗨️ REPLY

*2nd*



# Mahendra's

## Don't Let Your Studies Get Impacted By COVID-19 Pandemic

Stay Home & Study Online With Mahendras Hybrid Model

### Features



Offline Classes



Live Interactive Online Classes



Same Faculty



Same Batch



Same Batch Timing



Online Library Facility



Recorded Video



PDFs



Classes In Both Model

CONTACT US:

1800-103-5225

 [www.mahendras.org](http://www.mahendras.org)





✓ **05 May 2021**

**08:00 AM to 10:00 AM**

✓ **LIVE PREMIUM  
SILVER CARD**


**(CGL & CHSL)**

**03:00 PM to 05:00 PM**

✓ **LIVE PREMIUM  
GREEN CARD**

**(IBPS PO & CLERK)**

**BILINGUAL**



For Your Any Type of English  
Related Queries Join  
Telegram Channel :

**English Mahendras Live  
Or  
Sraya Mahendras English  
(srayamahendras)**



# Vocabulary

1) **Amass**

2) **Acrimonious**

3) **Anomaly**

