



Mahendra's

FOR MORE DISCOUNT VISIT www.mahendras.org & USE PROMO CODE :



Mahendra's

 **SBI Clerk 2021**

LIVE MOCK
DISCUSSION



LIVE  **8:30 AM**

Maths



Mahendra's

FOR MORE DISCOUNT VISIT www.mahendras.org & USE PROMO CODE : **E04613**





What should come at place of the question mark (?) in the following number series ?

11, 134 , 1327 , 11956 , 95635 , ?

(A)669458

(B)669468

(C)694655

(D)698765

(E)None of these





What should come at place of the question mark (?) in the following number series ?

6 , 14 , 45 , 184 , 925 , ?

(A) 6698

(B) 5556

(C) 5598

(D) 5578

(E) None of these





What should come at place of the question mark (?) in the following number series ?

22 , 20 , 48 , 210 , 1414 , ?

(A)16623

(B)16432

(C)12636

(D)14211

(E)None of these





What should come at place of the question mark (?) in the following number series ?

45 , 200 , 975 , 4850 , 24225 , ?

(A)121106

(B)112600

(C)142400

(D)121100

(E)None of these





What should come at place of the question mark (?) in the following number series ?

8 , 9 , 20 , 63 , 256 , ?

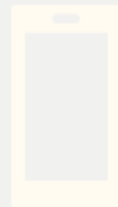
(A)1288

(B)1289

(C)1286

(D)1287

(E)None of these





Mahendra's

FOR MORE DISCOUNT VISIT www.mahendras.org & USE PROMO CODE : **E04613**



AKASH KR GUPTA 15 hours ago

- 1) 669458
- 2) 5556
- 3)
- 4) 121100..

Read more

👍 🗨️ REPLY



Shivani Gupta 15 hours ago

- 2--5556
- 5---1285

👍 🗨️ REPLY



Chandan Das 17 hours ago

- Hw answer
- 1.669458
 - 2.5556
 - 3.12636..

Read more

👍 1 🗨️ REPLY



RAVI VERMA 17 hours ago

Answer of No. Series :

- 1 - B - 669458
- 2 - B - 5556
- 3 - Not Done..

Read more

👍 1 🗨️ REPLY



Palak Shukla 18 hours ago (edited)

Homework answer-----

- {1} 6,14,45,184,925, ?
- ? = 5556 , Option B
- Logic -- $\times 2 + 2$, $\times 3 + 3$, $\times 4 + 4$,

Read more

👍 1 🗨️ REPLY



Muskan Singh 18 hours ago

1285

👍 1 🗨️ REPLY



Iomesh Rastogi 18 hours ago

- Q.1 - $95635 \times 7 = 669445 + 13 = 669458(B)$
- Q.2 - $925 \times 6 = 5550 + 6 = 5556(B)$
- Q.3 - not done
- Q.4 - $24225 \times 5 = 121125 - 25 = 121100(D)...$



Arunima Mishra 19 hours ago (edited)

- Q1) options a/b both are same ☐ ☐
- Q2) b
- Q3) c
- Q4) d...

Read more

👍 2 🗨️ REPLY



Arunima Mishra 19 hours ago

- Q1) ans 669458
- Q2) ans 5556
- Q3) ans 12636
- Q4) ans 121100..

Read more

👍 🗨️ REPLY



Puja 20 hours ago (edited)

- 2)5556
- 3)12636
- 4)121100
- 5)1285

👍 3 🗨️ REPLY



Suman Paul 5 hours ago

- 1) $\times 11 + 13$, $\times 10 - 13$, $\times 9 + 13$, $\times 8 - 13$, $\times 7 + 13 = 669458$
- 2) $\times 2 + 2$, $\times 3 + 3$, $\times 4 + 4$, $\times 5 + 5$, $\times 6 + 6 = 5556$
- 3)-----
- 4) $\times 5 - 25$, $\times 5 - 25$, $\times 5 - 25$, $\times 5 - 25$, $\times 5 - 25 = 121100..$

Read more

👍 🗨️ REPLY



Jagrati Chourasiya 9 hours ago

- 1 b
- 2b
- 3 c
- 4 d ..

Read more

👍 🗨️ REPLY



Mohd Faisal 10 hours ago

Answer-

Option- (E) 1285

👍 🗨️ REPLY



punit pandey 20 hours ago

1- B 669458

2-B 5556

3-C 12636

4-D 121100...

Read more



REPLY



Rajeshwari Bommana 20 hours ago

1-669458-b

2-5556-b

3-

4-121100-d...

Read more



REPLY



Shubham Singh 21 hours ago

1285



3



REPLY





UPCOMING ONLINE BATCHES

JULY 2021

07 July 2021

08:00 AM to 10:00 AM

**LIVE PREMIUM
GREEN CARD**
(BANK-PO & CLERK)

BILINGUAL

14 July 2021

10:30 AM to 12:30 PM

**LIVE PREMIUM
SILVER CARD**
(CGL & CHSI)

03:00 PM to 05:00 PM

**LIVE PREMIUM
STATE CARD**
(UPSSSC PET)

BILINGUAL

21 July 2021

01:00 PM to 03:00 PM

**LIVE PREMIUM
GREEN CARD**
(IBPS RRB PO/CLERK)
PRE + MAINS

BILINGUAL

28 July 2021

01:00 PM to 03:00 PM

LIVE PREMIUM BRONZE CARD
(TET)

10:30 AM to 12:30 PM

LIVE PREMIUM GREEN CARD
(IBPS PO & CLERK)

08:00 AM to 10:00 AM

LIVE PREMIUM SILVER CARD
(SSC CGL & CHSL)

BILINGUAL





Direction (31–35): In each question two equations numbered (I) and (II) are given. You have to solve both the equations and mark appropriate answer.

- (a) If $x = y$ or no relation can be established
- (b) If $x > y$
- (c) If $x < y$
- (d) If $x \geq y$
- (e) If $x \leq y$

**Q.31 :-**

I. $23x^2 - 29x - 88 = 0$

II. $29y^2 + 33y - 48 = 0$

Q.32 :-

I. $x^2 - 1200 = 244$

II. $y + 122 = 159$

Q.33 :-

I. $x^2 - 9x + 20 = 0$

II. $y^2 - 13y + 42 = 0$

Q.34 :-

I. $144x^2 - 16 = 9$

II. $12y + \sqrt{4} = \sqrt{49}$

Q.35 :-

I. $14x - 25 = 59 - 7x$

II. $\sqrt{(y+222)} - \sqrt{36} = \sqrt{81}$



Ex: $4+444+4444+44444+444444 = ?$

(A) 493780

(B) 53824

(C) 93824

(D) 49380

(E) None of these





Ex: $0.5+0.55+0.555+0.5555+0.55555+0.555555 = ?$

(A) 0.617280

(B) 3271605

(C) 6.17280

(D) 3.15210

(E) None of these





Ex: $0.2+0.22+0.222+0.2222+0.22222 = ?$

(A) 1.08642

(B) 108642

(C) 2.12356

(D) 4.52100

(E) None of these



An Addition and Subtraction of Fraction

Ex: $1\frac{1}{2} + 6\frac{1}{3} - 7\frac{1}{2} + 8\frac{1}{3} + 9\frac{1}{5} = ? - 6\frac{1}{5}$

Ex: $525 - 13^2 + 63 = ?^2 + 95$

- (a) 24 (b) 16 (c) 324 (d) 18 (e) None of these



Ex: 204% of ? = 1848.24

- (A) 517 (B) 784 (C) 321 (D) 906 (E) None of these**





Ex: $9786 - 4321 + 5053 = ? - 3727$

(A) 14245

(B) 14524

(C) 14452

(D) 14254

(E) None of these





Ex: $17/24 \div 68/24 \times 380/95 = (?)^2$

- (A) 4 (B) 8 (C) 6 (D) 9 (E) None of these



Ex: $3\frac{2}{7} + 6\frac{1}{7} - 2\frac{1}{7} + 13\frac{2}{3} = ?$

Sol:



Ex: $327 + 442 + 358 + 823 + 394 + 413 = ?$

- (a)2757 (b)2675 (c)2756 (d)2878 (d)None of these**





Ex: $\sqrt{324} + \sqrt{1296} = ?$

- (A) 52 (B) 44 (C) 54 (D) 42 (E) None of these





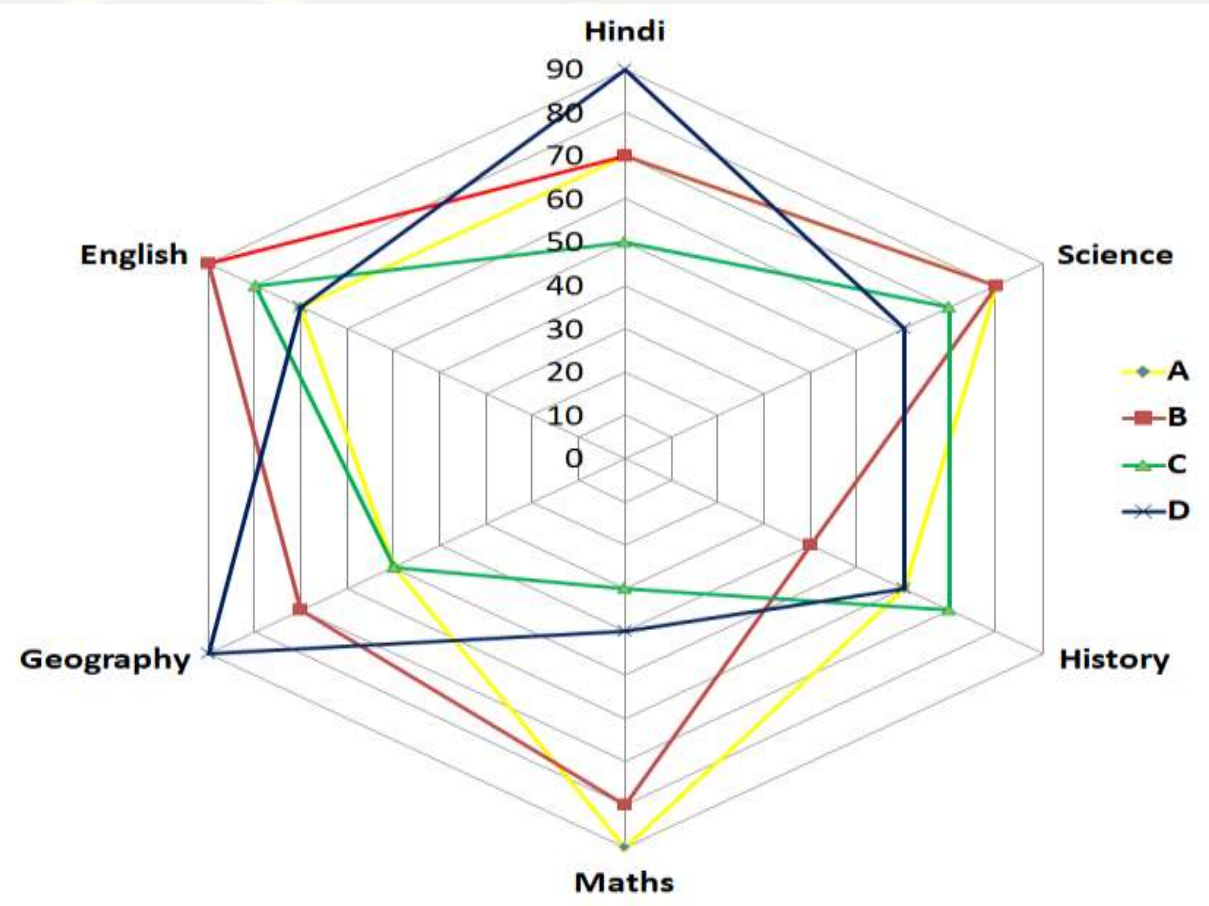
Mahendra's

FOR MORE DISCOUNT VISIT www.mahendras.org & USE PROMO CODE : **E04613**

Study the Following Graph carefully and give the answers

Radar graph given below shows marks (out of 100) obtained by the 4 students A, B, C and D in Hindi, Science, History, Maths, Geography and English.

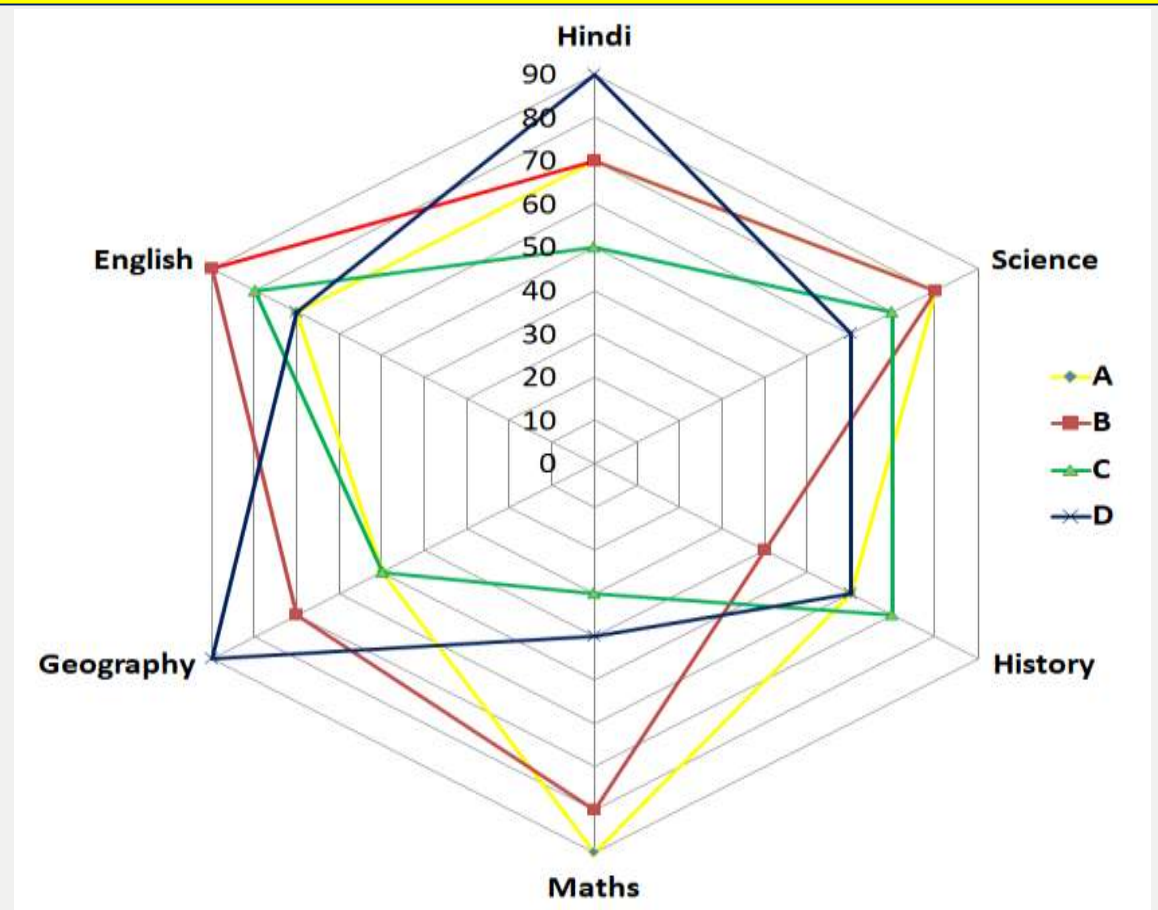
नीचे दिया गया रडार ग्राफ हिंदी, विज्ञान, इतिहास, गणित, भूगोल और अंग्रेजी में 4 छात्रों A, B, C और D द्वारा प्राप्त अंकों (100 में से) को दर्शाता है।





Q1. What is approximate overall percentage obtained by C in the examination?
प्र1. परीक्षा में C द्वारा प्राप्त कुल अंको का प्रतिशत लगभग क्या है?

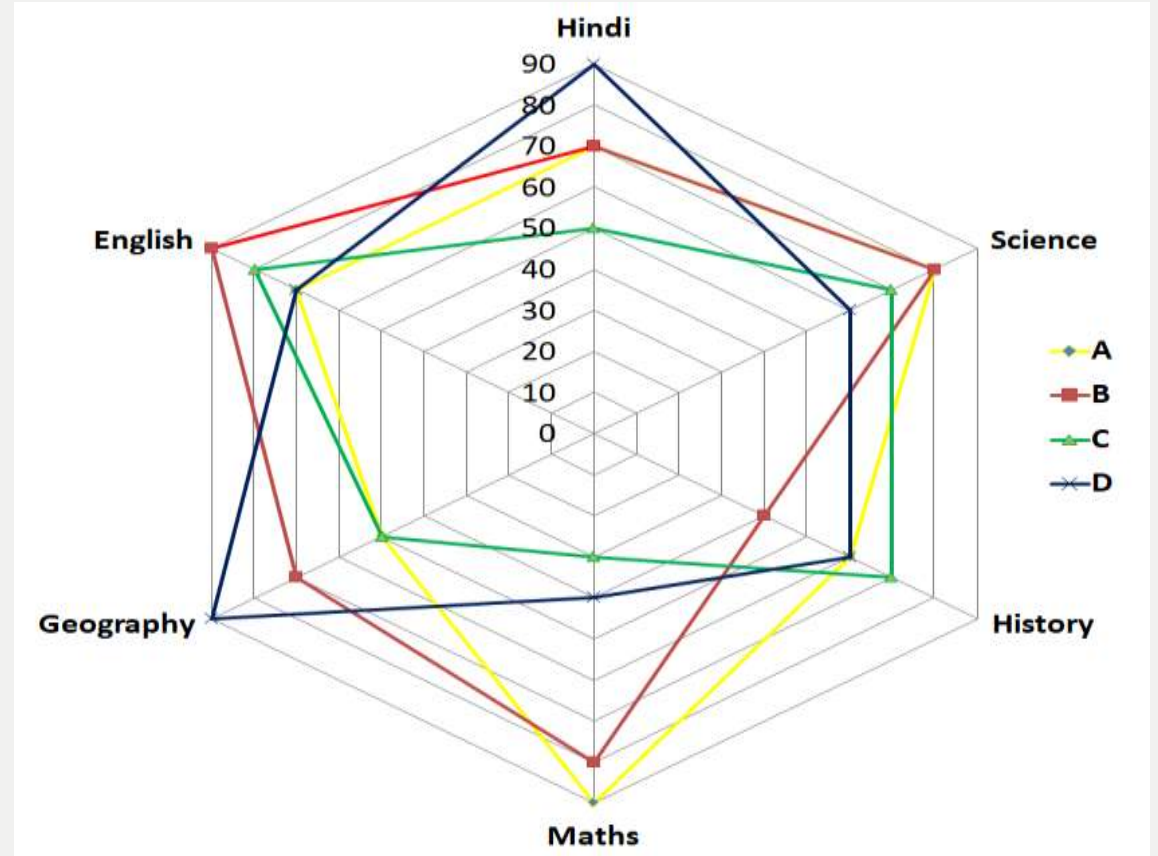
- (A) 66.66% (B) 62.5% (C) 55.66% (D) 58.33% (E) None of these



Q2. What is the difference in the marks obtained by B in English and Maths together and the marks obtained by D in the same subjects?

प्र२. अंग्रेजी और गणित में B द्वारा प्राप्त अंकों और इन्ही विषयों में D द्वारा प्राप्त अंकों में क्या अंतर है?

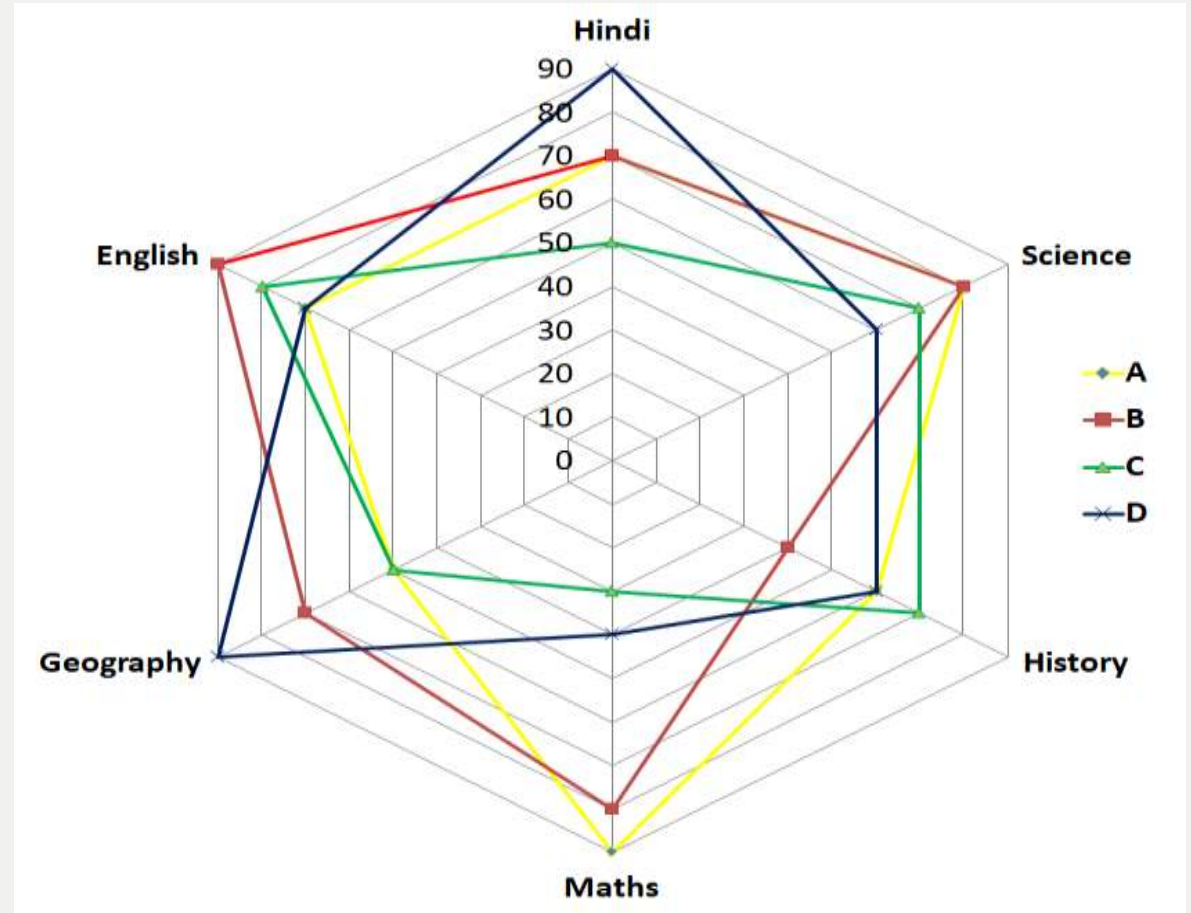
- (A) 10 (B) 20 (C) 15 (D) 30 (E) None of these



Q3. The marks obtained by A in Geography are what percent of the marks obtained by A in Hindi?

प्र3. भूगोल में A द्वारा प्राप्त अंक, हिंदी में A द्वारा प्राप्त अंकों का कितना प्रतिशत है?

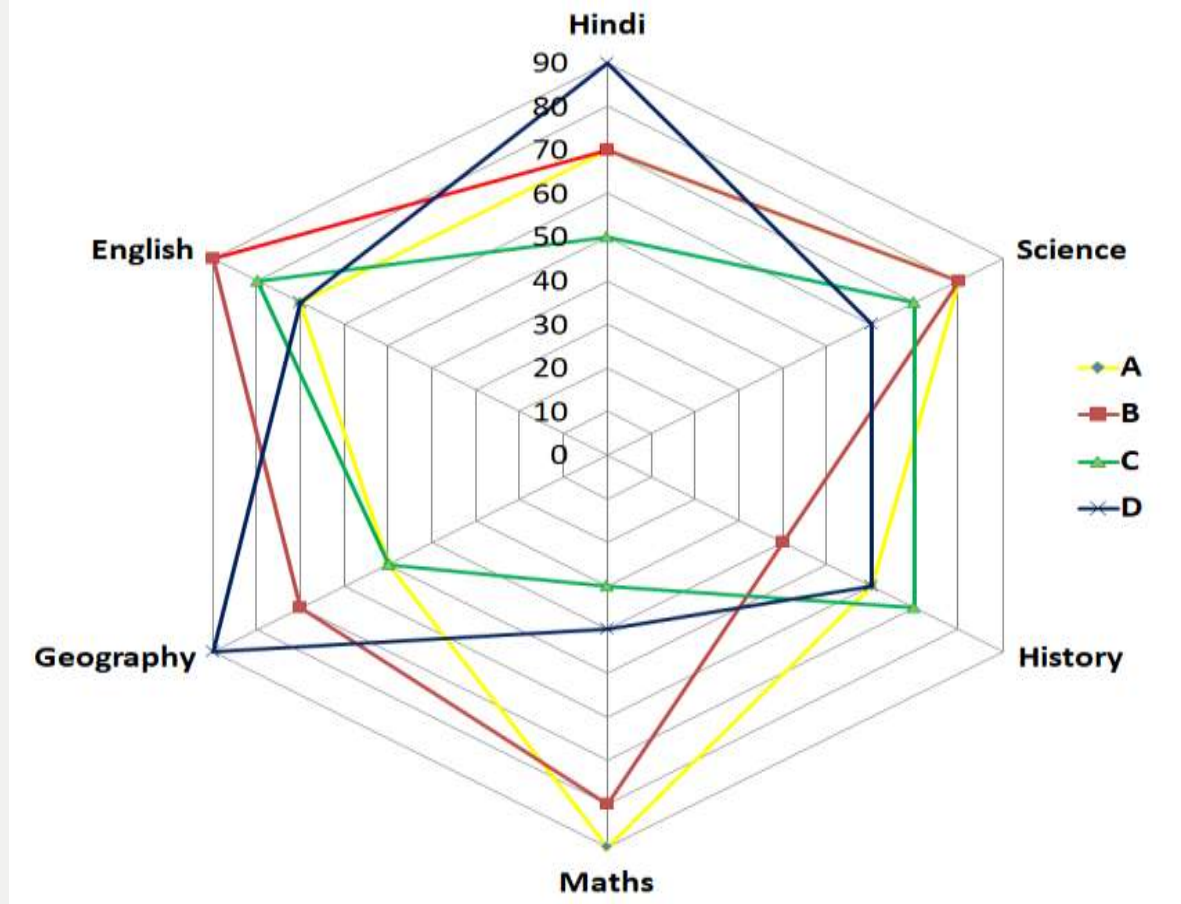
- (A) 66.66% (B) 87.5% (C) 62.66% (D) 71.42% (E) None of these



Q.4. Marks obtained by D in History and Geography together is what percent of total marks scored by him? (Approx)

प्र.4. इतिहास और भूगोल में D द्वारा प्राप्त अंक उसके द्वारा प्राप्त कुल अंकों का कितना प्रतिशत है? (लगभग)

- (A) 37% (B) 42% (C) 30% (D) 25% (E) None of these





Mahendra's

FOR MORE DISCOUNT VISIT www.mahendras.org & USE PROMO CODE : **E04613**

Q.5. What is the average marks obtained by all the students together in Science?
प्र.5. विज्ञान में सभी छात्रों द्वारा एक साथ प्राप्त किए गए औसत अंक क्या हैं?

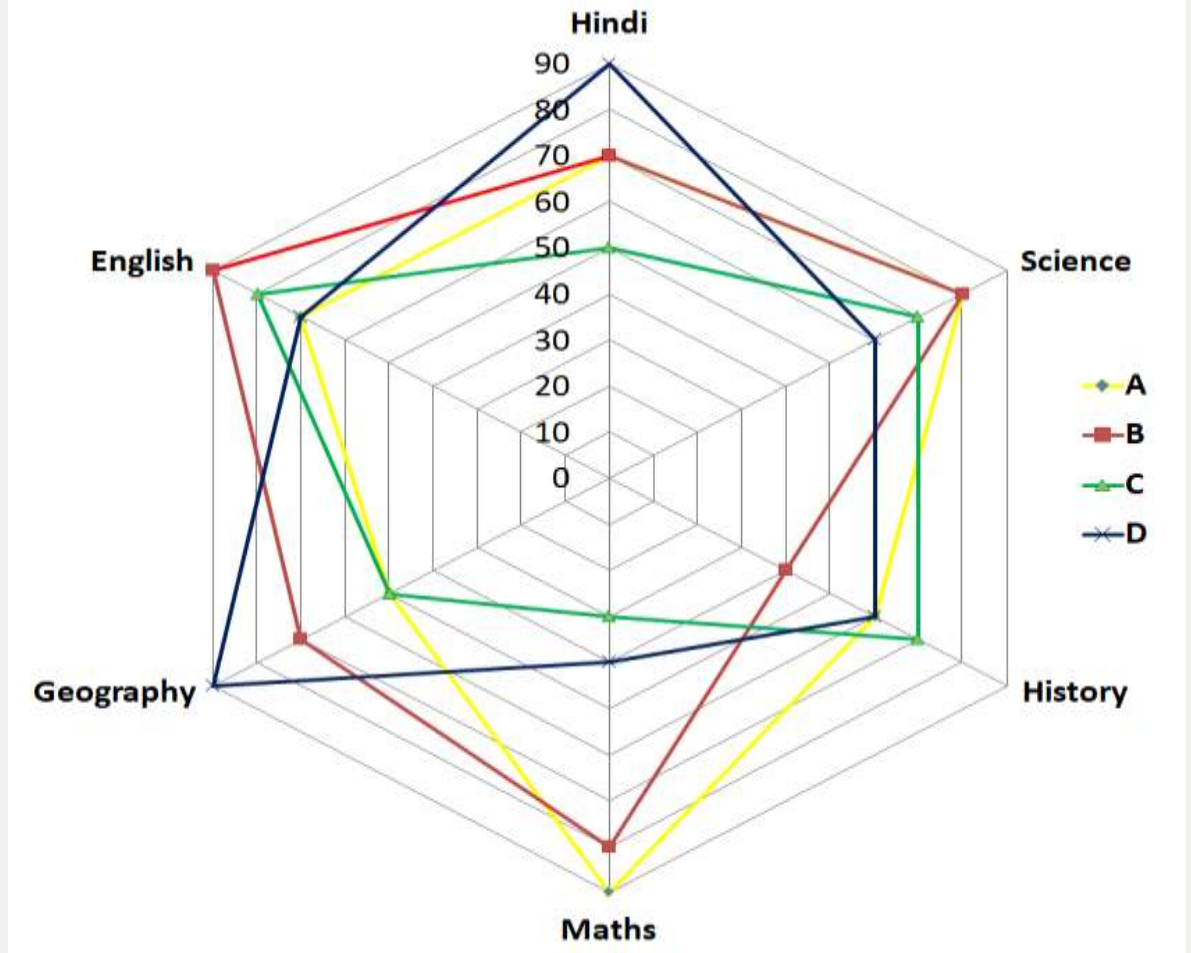
(A) 66.5%

(B) 72.5%

(C) 83.5%

(D) 79.5%

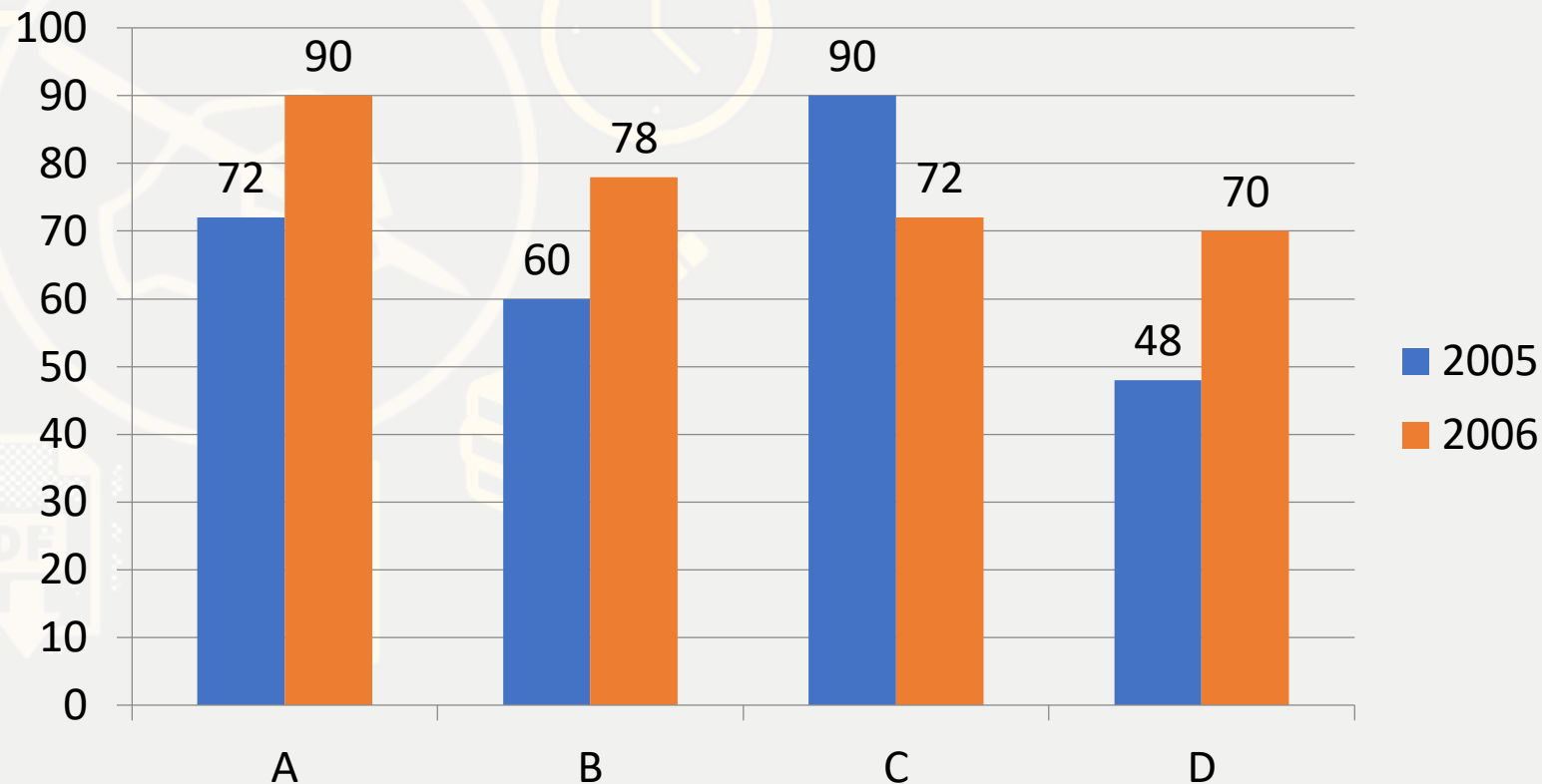
(E) None of these



Directions (Q. 26-30): Study the following Bar chart and answer the questions that follow:

Study the bar chart given below and answer the following questions.

Bar chart shows the number of books read by 4 different persons (A, B, C & D) in 2005 and 2006.





Q.26:- Find average number of books read by A, C & D in 2005 ?
A, C & D द्वारा 2005 में पढ़ी गई पुस्तकों की औसत संख्या ज्ञात कीजिए ?

(A) 64

(B) 70

(C) 75

(D) 60

(E) 56





Q.27:- Find ratio of books read by B & C together in 2005 to books read by A & D together in 2006.

2005 में B और C द्वारा एक साथ पढ़ी गई पुस्तकों का , 2006 में A और D द्वारा एक साथ पढ़ी गई पुस्तकों का अनुपात खोजें?

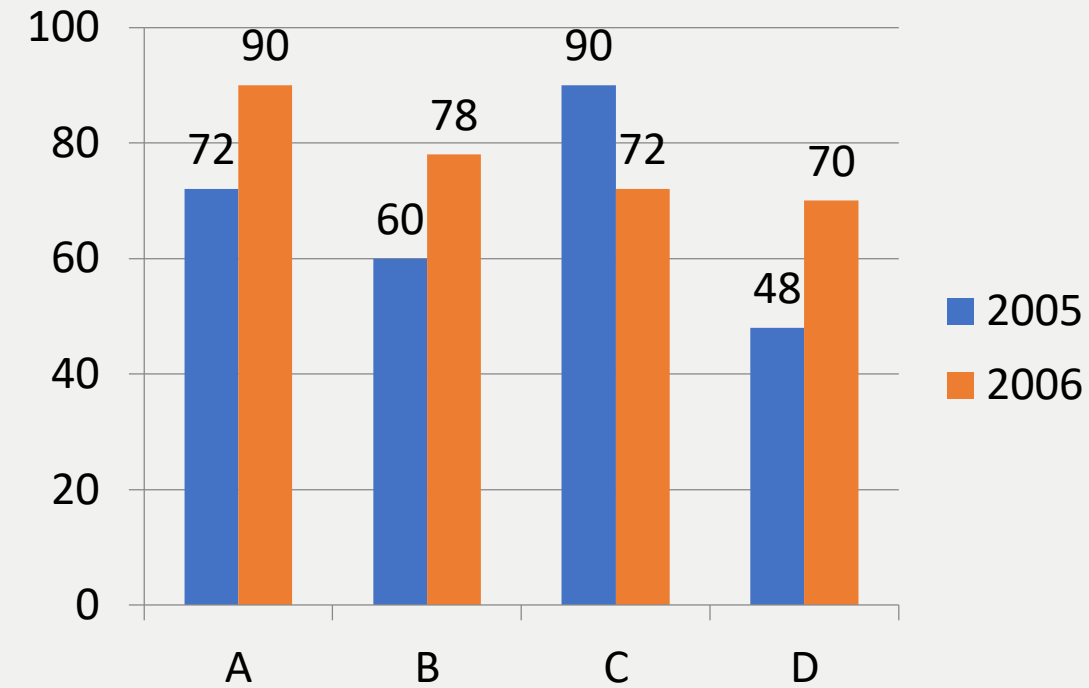
(A) 15:16

(B) 5:6

(C) 1:5

(D) 4:7

(E) 2:3





Mahendra's

FOR MORE DISCOUNT VISIT www.mahendras.org & USE PROMO CODE : **E04613**

Q.28:- Books read by A & D together in 2005 are what percent more than books read by C in 2006?

2005 में A और D द्वारा एक साथ पढ़ी गई पुस्तकें 2006 में C द्वारा पढ़ी गई पुस्तकों से कितने प्रतिशत अधिक हैं?

(A) 46.67%

(B) 55.33%

(C) 25.67%

(D) 33.33%

(E) 66.67%





Mahendra's

FOR MORE DISCOUNT VISIT www.mahendras.org & USE PROMO CODE : **E04613**

Q.29:- Books read by A & C together in 2005 are how much more or less than books read by B & D together in 2006?

2005 में A और C द्वारा एक साथ पढ़ी गई पुस्तकें 2006 में B और D द्वारा एक साथ पढ़ी गई पुस्तकों से कितनी अधिक या कम हैं?

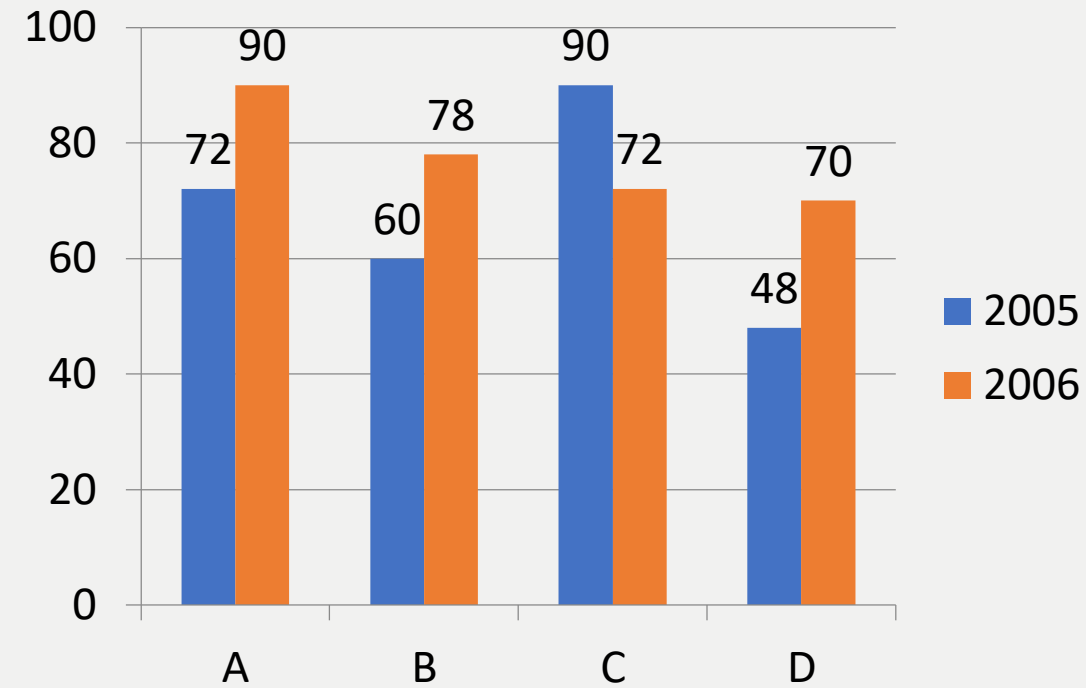
(A)24

(B)14

(C)18

(D) 22

(E)28





Q.30:- Books read by B & C together in 2006 are what percent of books read by B in 2005?

2006 में B और C द्वारा एक साथ पढ़ी गई पुस्तकें 2005 में B द्वारा पढ़ी गई पुस्तकों का प्रतिशत क्या हैं?

(A)100%

(B)120%

(C)250%

(D) 200%

(E)160%





THANKS

